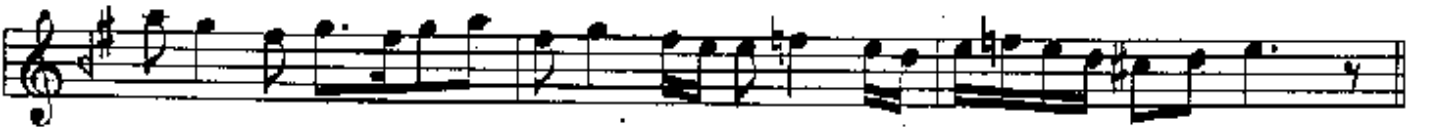


USUL: DEVR-I KEBİR

BESTE: H.FEHMİ MUTEL

*Birinci Hane*



*Mülazeme* 



BON

*İkinci Hane*



*Üçüncü Hane*



Musical notation for Üçüncü Hane, consisting of four staves. The first staff begins with a treble clef, a key signature of one sharp (F#), and a 2/2 time signature. The melody is written in a single line. The second and third staves contain two triplet markings, each indicated by a bracket with the number '3' above it. The fourth staff concludes the piece with a double bar line.

*Dördüncü Hane*



Musical notation for Dördüncü Hane, consisting of four staves. The first staff begins with a treble clef, a key signature of one sharp (F#), and a 2/2 time signature. The melody is written in a single line. The second and third staves contain various rhythmic patterns and accidentals, including a flat sign (b) on a note in the second staff. The fourth staff concludes the piece with a double bar line.