

BÜSELİK AŞIRAN SAZ SEMAİSİ

MÜZİK: İZAK

USÛL: AKSAK SEMAİ

♩ = 124

1. HÂNE VE MÜLÂZİME

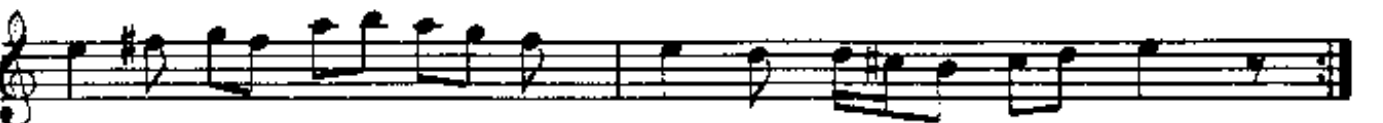


(SON)

2. HÂNE



3. HÂNE



The image displays a musical score for a piece in G major (one sharp) and 2/2 time. The score consists of ten staves of music. The first staff begins with a repeat sign and a key signature of one sharp (F#). The music is written in a treble clef. The fifth staff is marked with the text "4. HANE" above the first measure. The eighth staff contains a first ending bracket labeled "1." and a second ending bracket labeled "2.". The final staff concludes with a double bar line and a repeat sign, with the word "shura" written below the staff.