

BUSELİK AŞIRAN PEŞREV

USUL: DEVR-İ KEBİR

BESTE: NEYZEN EMİN EFENDİ

1.HANE

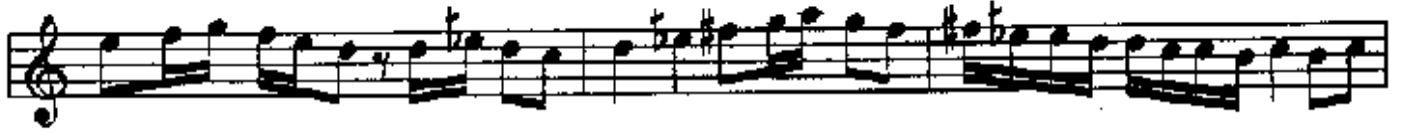


TESLİM



2.HANE





3.HANE



4.HANE



The image displays a musical score for a single melodic line in G major (one sharp) and 3/4 time. It consists of seven staves of music. The notation includes quarter notes, eighth notes, and sixteenth notes, with various rests and phrasing slurs. The piece concludes with a double bar line and the word "SON" written below the final staff.