

BAYÂTÎARABAN PEŞREVİ

MEVRİKEBİR

Cinuçan Tanrıkorur

1. HANE

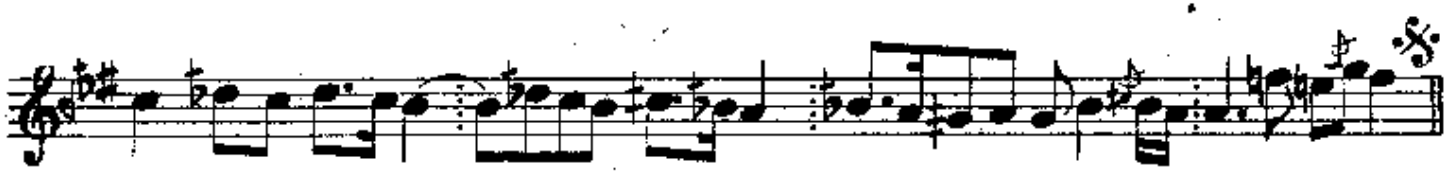
The first section of the piece, labeled "1. HANE", consists of seven staves of musical notation. The first staff begins with a treble clef, a key signature of two sharps (F# and C#), and a 2/4 time signature. The notation includes various rhythmic values, accidentals (sharps, flats, naturals), and dynamic markings such as *p* and *f*. The second staff continues the melody with similar notation. The third staff features a key signature change to one sharp (F#) and includes a *p* marking. The fourth staff continues the melody with a *f* marking. The fifth staff shows a key signature change to one sharp (F#) and a *p* marking. The sixth staff includes a triplet of eighth notes and a *p* marking. The seventh staff concludes the first section with a *f* marking. Below the seventh staff, there are four boxes labeled "2. Haneye", "3. Haneye", "4. Haneye", and "Karar", each containing a few notes of the melody.

2. HANE

The second section of the piece, labeled "2. HANE", consists of three staves of musical notation. The first staff begins with a treble clef, a key signature of two sharps (F# and C#), and a 2/4 time signature. The notation includes various rhythmic values, accidentals, and dynamic markings such as *p* and *f*. The second staff continues the melody with a *p* marking. The third staff concludes the second section with a *f* marking.



3. HANE



4. HANE

