

# NIHÂVEND ŞARKI

Çarçuna

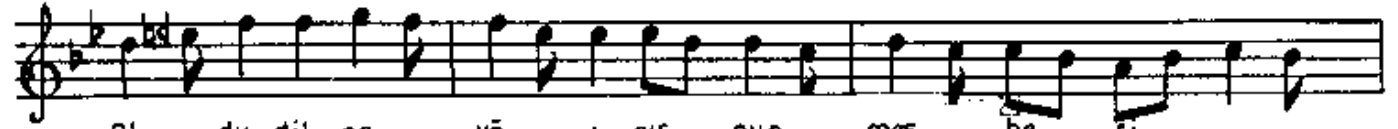
Bestekârı: Rahmi Bey



Saç — la — rı na bağ ja na k e



ey pe — ri ( S A Z ) ( S A Z )



Ol — du dil en — vâ — ı cü — nün meş he — ri  
Mâ — tem i — çin — de gö — rü — yor her ye — ri



Ol — du dil en — vâ — ı cü — nün  
Mâ — tem i — çin — de gö — rü — yor



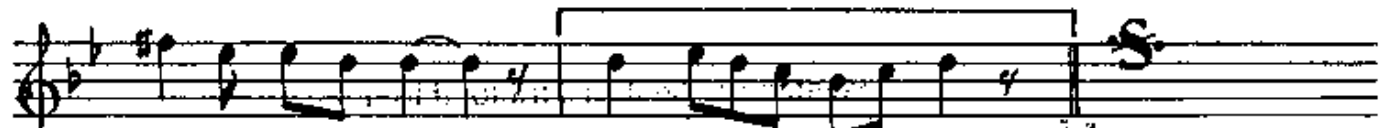
meş he — ri (SON) ( S A Z )  
her ye — ri



Has — re — ti — çeş — mi si ye — hin gö — zü —



m Has — re — ti çeş — mi si — ye — hin



le gö züm S A Z Ümit