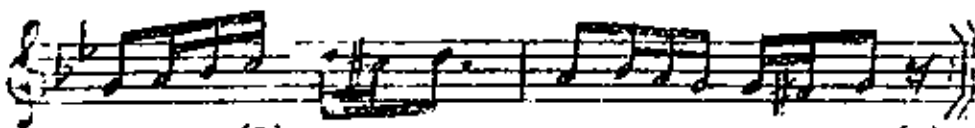
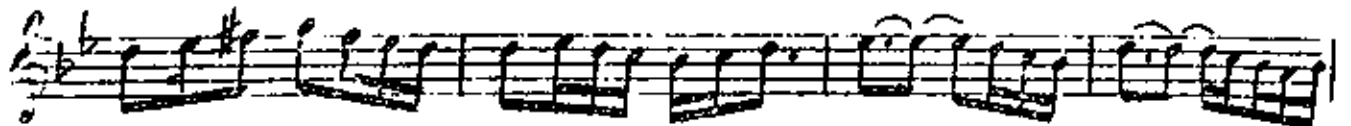
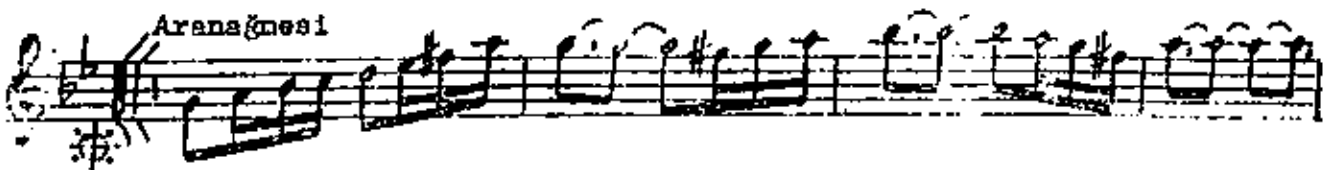
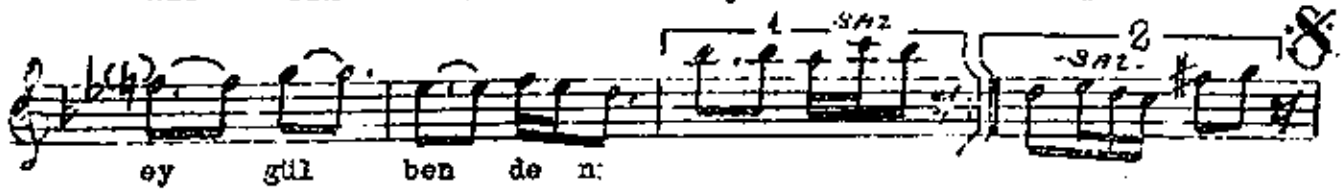
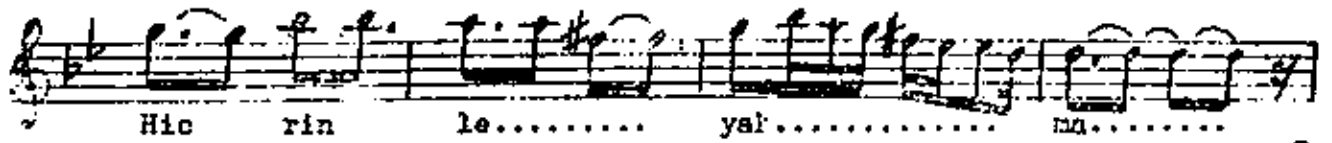
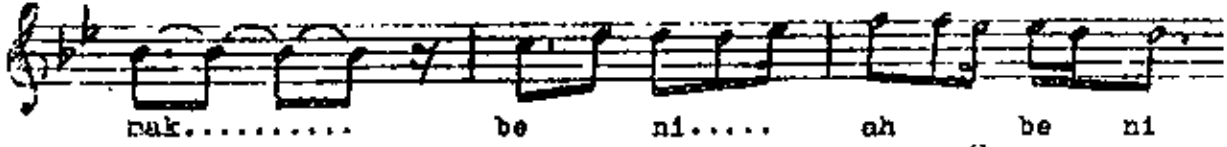
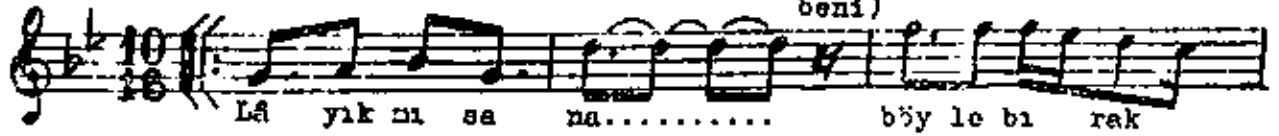


NIHAVEND ŞARKI Beste: Kemanî Mustafâ
Usulü: Cürcüna Güfte: Said Bey
(Lâ yık mı sana böyle bırakmak beni)



(1).
Lâyıkı sana böyle bırakmak beni
Ölse de billâh terkötmen seni
Hicrinle yakma ey gül bendeni
Ölse de billâh terkötmen seni

(2)
Halet-i nez'inde olsan unutmam güzel
Severim ben ebediyen gelme de ecel
Aşkına artık inan aşığına gel
Ölse de billâh terkötmen seni.