

KÜRDİ SAZ SEMÂİSİ BEGONVİL

YURDAL TOKCAN

1.HANE

Musical notation for the first staff of the piece, labeled "1.HANE". It features a treble clef, a key signature of one flat (B-flat), and a 10/8 time signature. The melody consists of eighth and sixteenth notes, with a triplet of eighth notes in the second measure. The staff ends with a repeat sign.

TESLİM

Musical notation for the second staff of the piece, labeled "TESLİM". It continues the melody from the first staff, starting with a repeat sign. It includes a triplet of eighth notes in the seventh measure and ends with a repeat sign.

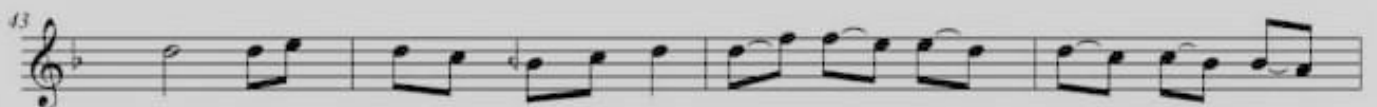
2.HANE

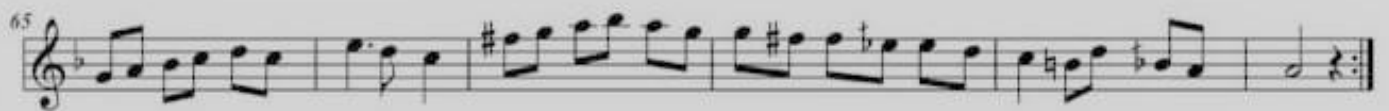
Musical notation for the third staff of the piece, labeled "2.HANE". It continues the melody from the second staff, starting with a triplet of eighth notes in the ninth measure. The staff ends with a repeat sign.

3.HANE

Musical notation for the fourth staff of the piece, labeled "3.HANE". It continues the melody from the third staff, starting with a triplet of eighth notes in the thirteenth measure. The staff ends with a repeat sign.

4.HANE





04-05-2020

rit.....