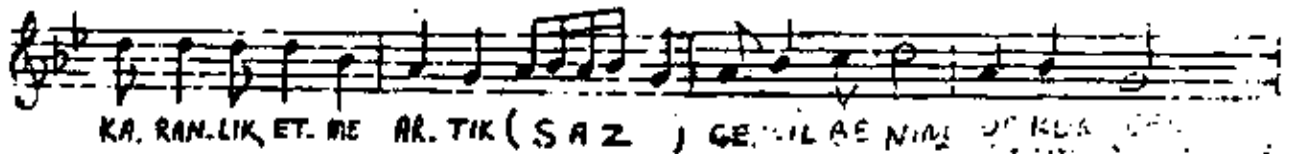
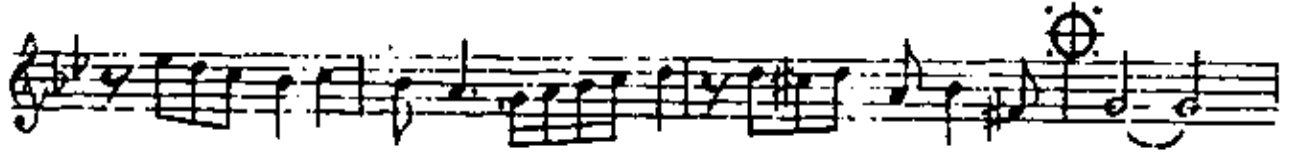
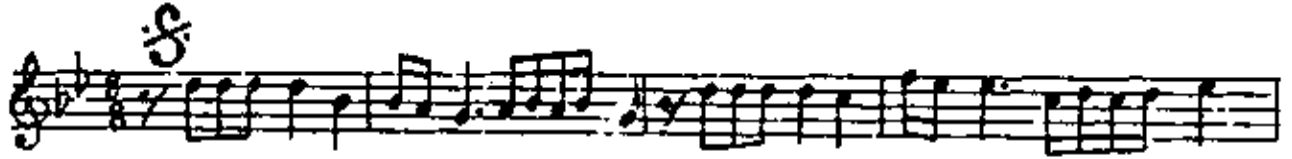


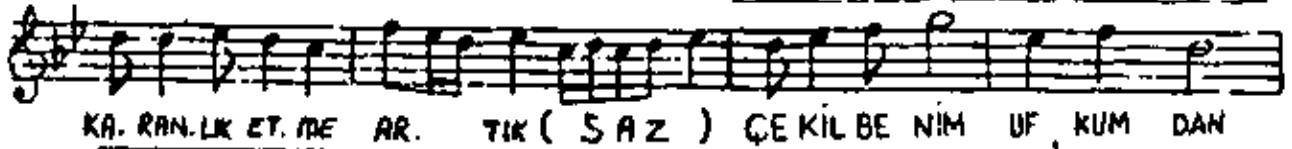
DÜYEK

KARANLIK ETME ARTIK

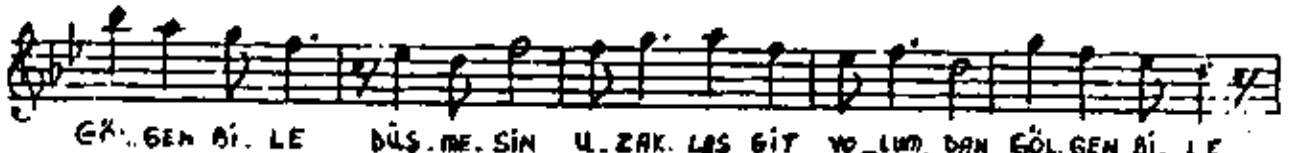
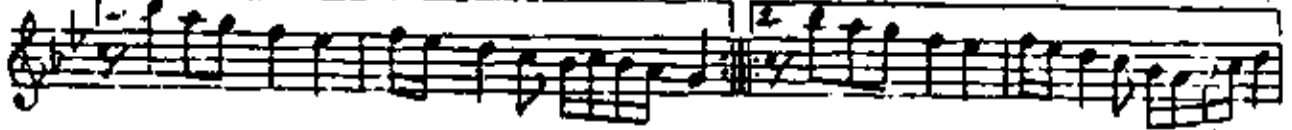
MÜZİK: ZİYA TAŞKENT



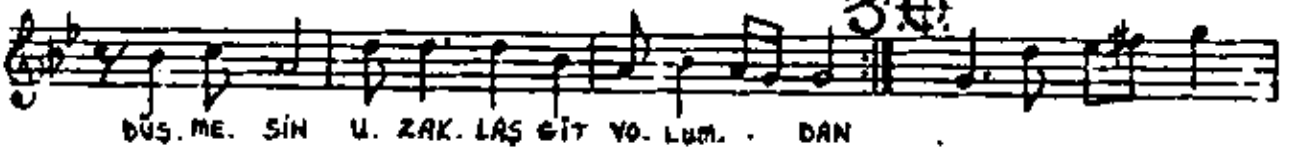
KARANLIK ETME ARTIK (SAZ) ÇEKİL BE NİM UF KUM DAN



KARANLIK ETME ARTIK (SAZ) ÇEKİL BE NİM UF KUM DAN



GEĞEN BİLE DÜŞME SİN UZAK LAŞ GİT YOLUN DAN GÖLGEN BİLE



DÜŞME SİN UZAK LAŞ GİT YOLUN DAN



GEÇTİ ARTIK O GÜNLER KORKMU YORUM SEVGİN DEN



GEÇTİ ARTIK O GÜNLER KORKMU YORUM

SEV. GİN. DEN (SAZ - - - - -)

AŞ. KIN SEV. GİN HER ŞE. YİN HER ŞE. YİN SE. NİN OL. SUN

AŞ. KIN SEV. GİN HER ŞE. YİN HER ŞE. YİN SE. NİN OL. SUN

The image shows three staves of musical notation in a treble clef with a key signature of one flat (B-flat). The first staff contains the lyrics 'SEV. GİN. DEN' followed by '(SAZ - - - - -)' in parentheses. The second and third staves contain the lyrics 'AŞ. KIN SEV. GİN HER ŞE. YİN HER ŞE. YİN SE. NİN OL. SUN'. The notation includes various note values, rests, and a double bar line at the end of the third staff.

~~KARANLIK ETME ARTIK GEKİL BENİM UFKUNDAN~~
~~GÖLGEN BİLE DÜŞMÜSÜN UZAKLAS GİT YOLUMBANI~~
GEÇTİ ARTIK O GÜNLER, KORKMUYORUM SEVGİNDEN
~~AŞKIN SEVGİN HERŞEYİN, HERŞEYİN SENİN OLSUN~~