

NIHÂVEND ŞARKI

USÛLÜ : DEVR.İ HİNDİ

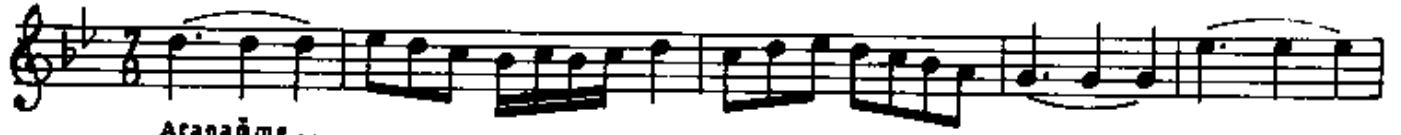
(GÜZELİM GEL YİNE MEHTABTA KURUP TAHTIMIZI)

MÜZİK : YÜCEL AŞAN

19. 7. 1981

SÖZ : NİVAZİ ERSAN

♩ : 160



NİHÂVEND ŞARKI
GÜZELİM GEL YİNE MEHTABTA KURUP TAHTIMIZI
(Şahife - 2)

The image shows a musical score for the song 'Nihâvend Şarkı'. It consists of five staves of music in a single system. The first staff begins with a '2.' marking. The lyrics are written below the notes: 'YA ZA LIM BİZ' on the first staff, 'SU YA MEH TAB Gİ Bİ' on the second, and 'GEL AH DI MI Zİ' on the third. The fourth and fifth staves contain instrumental notation. A '(Saz...)' marking is present above the fourth staff. The score ends with a double bar line and a 'uyak' marking.

GÜZELİM, GEL YİNE MEHTABTA KURUP TAHTIMIZI
UÇALIM ENGİNE ŞARKINDAN ALIP GİZLİ HIZI
YAZALIM BİZ SUYA MEHTAB GİBİ GEL AHDİMİZİ
UÇALIM ENGİNE ŞARKINDAN ALIP GİZLİ HIZI.