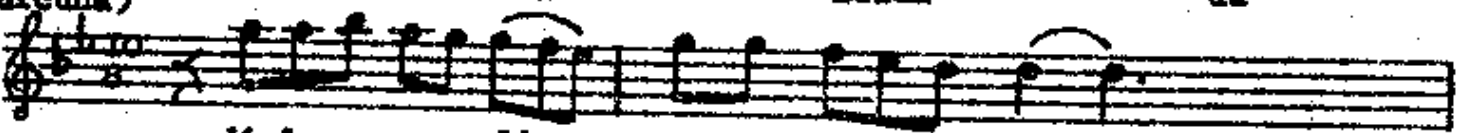
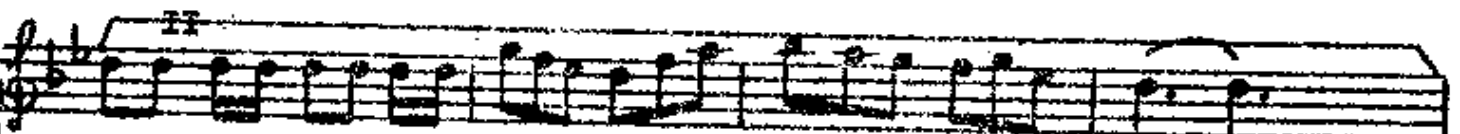
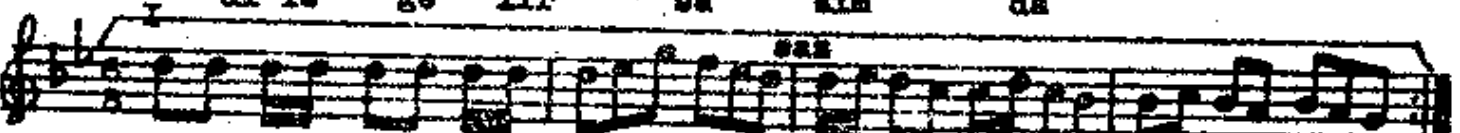


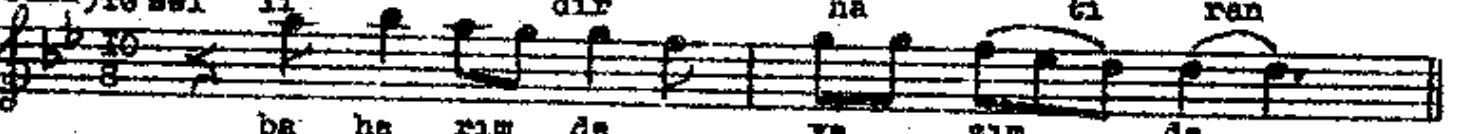
(Circuna) Bir hü sün var hüzün da



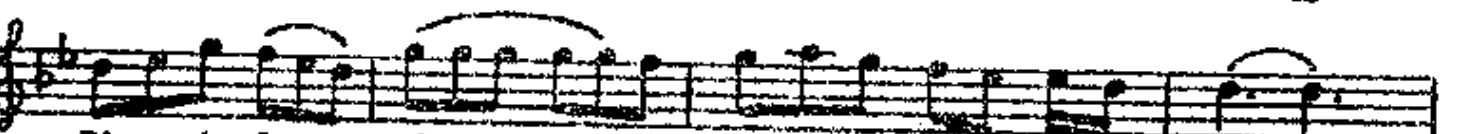
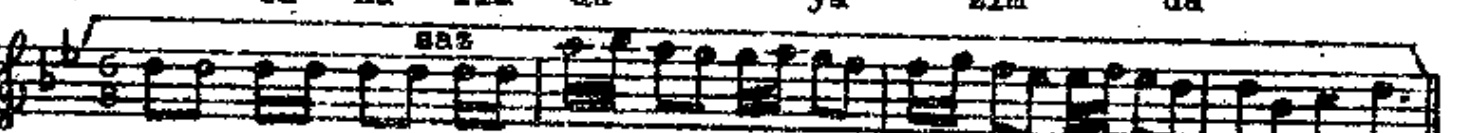
di le ge lir sa sün da



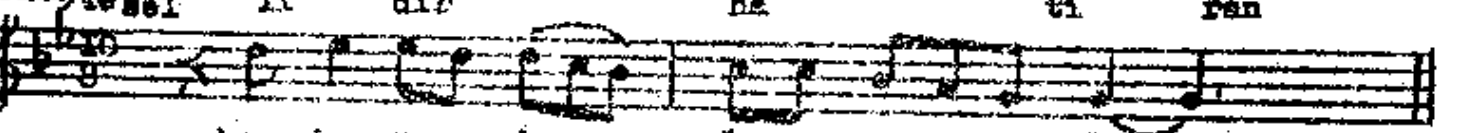
Bir ci le dir has re tin
reuna) Te sel li dir ha ti ran



ba ha rım da ya sün da

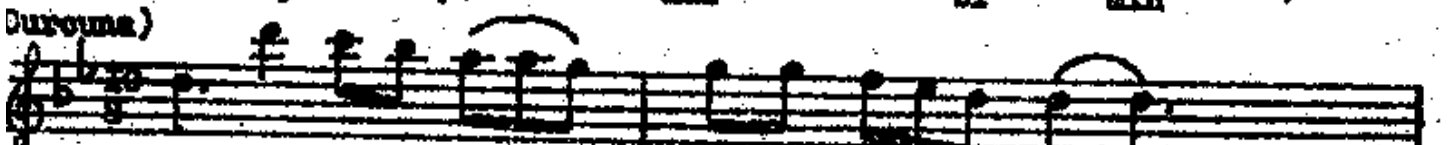
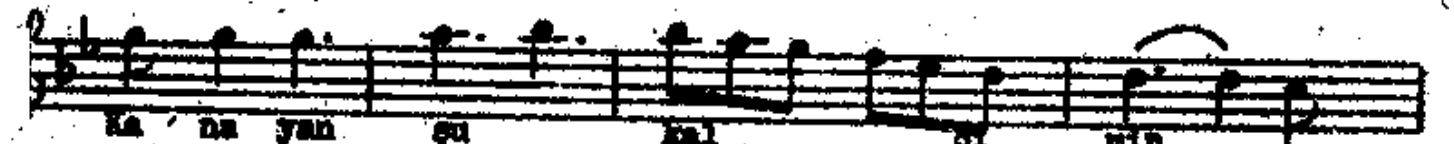
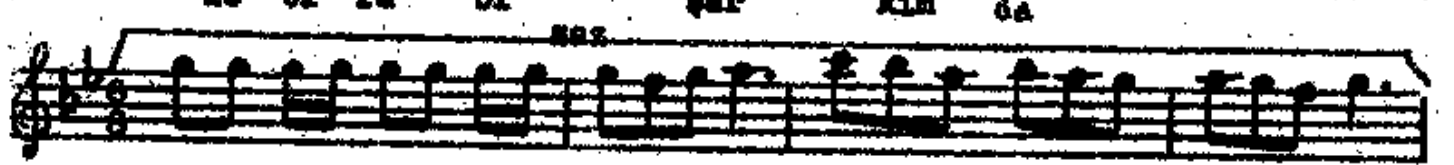
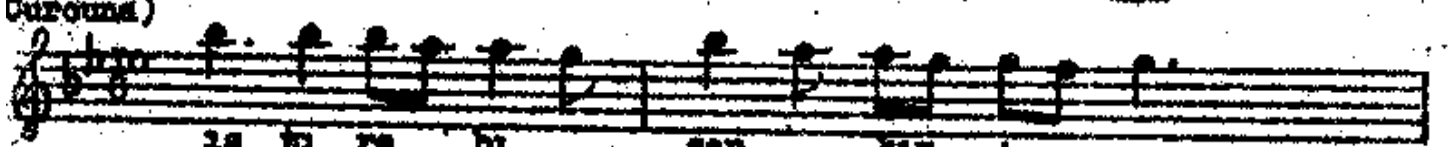
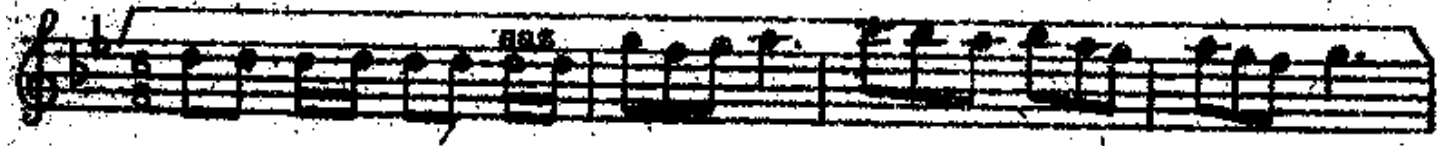


Bir ci le dir has re tin
reuna) Te sel li dir ha ti ran



ba ha rım da ya sün da

SON



Bir hüzün var hâzânda, dile gelir sazında
Bir çiledir hasretin, baharında yasında
Kanayan şu kalbimin ıstırebı şarkında
Tesellidir hâtıran, baharında yasında.